



AHINSADHAM®

• • Pashu Raksha Kendra • •

AHINSADHAM

A Journey of Compassion towards Animals & Environment



Rescue



Heal



Sustain





AHINSADHAM®

•• Pashu Raksha Kendra ••

ABOUT US

Ahinsadham – Bhagwan Mahavir Pashu Raksha Kendra is a leading sanctuary rooted in compassion and non-violence (Ahinsa), located near Mundra Port in Kutch, Gujarat. Established in **1990** and inaugurated in **1995**, it began with a 5 acre land donation and has grown under the leadership of Shri Mahendra Ratanshi Sangoi into a **600** acre refuge for over **3,000** injured, abandoned, and disabled domestic animals and birds.

The campus houses a fully equipped, **24/7 veterinary hospital** with two dedicated ICUs that can accommodate up to 500 animals, along with surgical units and specialized areas for equines, birds, and handicapped animals. Every rescued life receives expert treatment, lifelong shelter, and the dignity it deserves.

Ahinsadham operates across two campuses **Sankul** and **Nandi Sarovar**. Nandi Sarovar features rainwater harvesting systems and multiple man made lakes that recharge groundwater and support animal care throughout the year. As part of our environmental mission, over **5,00,000** trees have already been planted under our 10,00,000 plantation drive. Guided by Ahinsa, seva, and sustainability, Ahinsadham is building a more compassionate and conscious future for all.





AHINSADHAM®

• • Pashu Raksha Kendra • •

VISION

To build a world where animals and birds are rescued, healed, and given safe refuge, while nature is protected through tree plantation, water conservation, and biodiversity preservation. We believe extravagant sanctuaries that nurture life, restore ecosystems, and inspire communities to embrace harmony between humans, animals, and the environment. Guided by the values of ahinsa and seva, we strive to ensure dignity, care, and sustainability for generations to come.

MISSION

Anchored in the enduring values of Ahinsa, our mission is to offer hope and healing to animals and birds in need through free medical care, safe shelter, and progressive welfare programs. We strive to plant 10,00,000 trees to restore ecosystems and reforest arid lands into sanctuaries, creating a peaceful and suitable environment for natural habitats. This initiative restores lost habitats, improves air quality, conserves water, and fosters harmony between nature, animals, and humans. Every life we touch becomes a step toward a more compassionate world.



Rescue



Heal



Sustain





AHINSADHAM®

• • Pashu Raksha Kendra • •

AHINSADHAM

Bhagwan Mahavir Pashu Raksha Kendra

ELITE VETERINARY HOSPITAL



- Six major departments, including advanced X-ray, veterinary laboratory, and operation theatres, among others.
- Hydraulic tables for surgical precision.
- 24/7 comprehensive care, covering emergency and routine treatments.

INDIA'S LEADING ANIMAL CARE ICUS



- Two vast 11,000 sq. ft. ICUs wings.
- 500+ critically ill animals treated round the clock.
- Specialized surgeries and recovery care for severe illnesses like cancer and tumors.

EXPERT VETERINARY DOCTORS



- Treats 2500 - 3000 animals and birds every month.
- Staffed by 11 professionals & 8 nurses specialized for animal treatment.
- Renowned for handling rare & critical cases.



AHINSADHAM®

• • Pashu Raksha Kendra • •

NANDI SAROVAR

Caring for animals through smart, sustainable water systems

MANMADE OASIS



- A 35 acre manmade lake enriching the surrounding ecosystem.
- 4 manmade lakes maintain steady water availability all year.
- Provides water for animals and birds during summer and drought.

RAINWATER HARVESTING SYSTEM



- Structured harvesting which collects and stores rainwater in our lakes.
- Channels water for reforestation use round a year.
- Turning barren land into fertile land through this system.

NARMADA RESERVOIR



- 2.1 million litre water tank.
- Supports drip irrigation across 400 acres.
- Balanced TDS maintained by blending Narmada river and Sarovar water in reservoir.



AHINSADHAM®

• • Pashu Raksha Kendra • •

A VISION TURNING INTO REALITY

Growing for a greener tomorrow

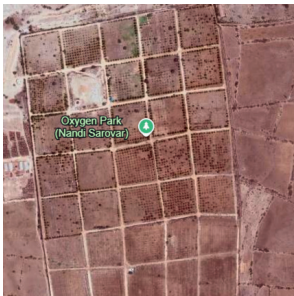


MISSION PLANTING
10,00,000 TREES

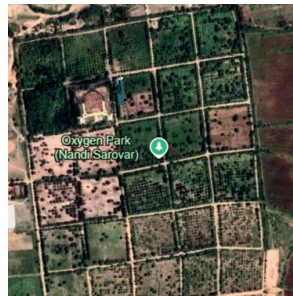
OUT OF **600** ACRES OF LAND,
225 ACRES ARE DEDICATED
TO **AFFORESTATION**

Tapovan Dham -

The two images below show our journey from April 2011 to January 2022 not just a change in land, but a powerful story of commitment, action, and ecological revival. Once dry and sparse, this 225 acre land is now blooming with over 5,00,000 trees, forming the heart of our dream to plant Ten Lakh trees.



THEN
APRIL 2011



NOW
JANUARY 2022

(Note: Satellite imagery sourced from Google Earth)

Our Goals:

- Expand Tree Plantation – Reach our Ten Lakh trees goal.
- Ensure Water Conservation – Develop sustainable irrigation.
- Create Green Sanctuaries – Protect environment and biodiversity.



AHINSADHAM®

•• Pashu Raksha Kendra ••

HOME TO RESCUED CATTLE HERDS

Designed for comfort, hygiene, and well-being of rescued animals



गौ सेवा परमोधर्मः



SUPPORTS OVER **3,000**
ANIMALS WITH DAILY
CARE AND SAFETY.

SHELTER HOUSE -

The cattle sheds at Nandi Sarovar are thoughtfully designed to provide animals with comfort in every season. This spacious layout allows trucks, tractors, and tippers to directly access feeding areas, making fodder unloading quick and efficient with minimal labour. This systematic layout helps us manage thousands of cattle efficiently, while maintaining cleanliness and providing them with a safe and comfortable space.

- Over 2,19,000 sq. ft. shed area built to ensure safe and healthy living.
- 8 spacious, hygienic sheds designed for cattle comfort.
- Well-planned drainage and water systems ensuring cleanliness.





AHINSADHAM®

• • Pashu Raksha Kendra • •

THRIVING NURSERY



- Our nursery cultivates 25,000+ diverse plant species to nurture with care for reforestation and ecological restoration.
- We grow a variety of Ayurvedic and medicinal plant saplings, offering natural remedies for health and wellness.

SEED BANK

- We preserve 80+ native seeds to support farmers and safeguard nature's legacy.
- As part of our activities, we also provide these seeds to farmers free of cost to encourage and to have a sustainable agriculture, also preserving biodiversity.





AHINSADHAM®

•• Pashu Raksha Kendra ••

SHADE AND SUSTENANCE



- We plant fruit-bearing and vast shaded trees for our refuge to create crucial food and shelter in our sanctuary.
- For the birds and animals that rely on our land, this substantial planting offers vital ecological support.

KUTCH'S BIRD REFUGE

- We offer a free, safe resting place and shade for migratory birds in our sanctuary & sarovar.
- This protected stopover sustains species like Flamingos, Pelicans, Cranes, Cuckoos and Storks etc, preserving an critical element of Kutch's ecological heritage.





AHINSADHAM®

•• Pashu Raksha Kendra ••

STEPS TOWARD CHANGE



Hawada

A 12-foot high structure giving animals access to cool drinking water.



Majestic Grasses

Nutritious Gajraj, Jinjva, and Napier grasses cultivated for animals.



Gol Gaman

This round manger allows 25 animals to feed peacefully together, promoting unity.



Shelter House

Provides rescued cattle with shade, clean water, and lifelong protection with dignity, comfort, and care.



Handicapped Animals

This sanctuary offers comfort, and dignity to handicapped animals and free grazing.



Global Avian Sanctuary

Offers rare and migratory birds a safe resting haven during their long journeys, through seasonal trails.



Solar Panel

Generates green energy, enabling smooth workflow for sustainable impact efficiently.



Borewell Recharge

Revives groundwater naturally through efficient rainwater infiltration methods.



Herbal Plantation

Ayurvedic plants are cultivated for traditional healing practices and natural wellness benefits.





AHINSADHAM®

•• Pashu Raksha Kendra ••

NANDI GOPAL

The Pride of Ahinsadhham



HOLDS THE
WORLD RECORD
FOR THE **LONGEST**
HORNS ON A BULL
OFFICIALLY
RECORDED ON
21ST AUGUST
2002

A LEGEND OF STRENGTH & DEVOTION

In honour of Gopal, our legendary bull, we built the Gopal Smriti Mandir with a life-size statue as a lasting tribute to his strength, legacy, and impact on our community.



Today, we have preserved the proud memory of our legendary bull Gopal in the Vineshalaya Museum, where his record-holding horns, each weighing 35 kg and measuring 1.4 m in length, are proudly displayed.



AHINSADHAM®

•• Pashu Raksha Kendra ••

KEY FACILITIES



Animal Fodder Storage

We've built a secure 8 specialized storage units, covering over 40,000 square feet, ensure a reliable year round fodder supply for the animal's well-being.

Ahinsa Hall

A 500 seat auditorium dedicated to animal welfare, ahinsa, and environmental awareness. It hosts regular seminars and educational programs.



Bhojan Shala

We serve daily wholesome, nutritious Jain meals, ensuring visitors and guests feel welcomed in a warm, inviting atmosphere.

Vineshalaya Museum

A public exhibition dedicated to spreading awareness on Ahinsa (non-violence) and environmental conservation through inspiring displays.





AHINSADHAM®

•• Pashu Raksha Kendra ••

KEY FACILITIES



Navneet Auditorium

A modern screening space showcasing documentaries on Ahinsadham, educating students and visitors on our mission and achievements.

Equine Animal Special Zone

This special zone ensures expert care for handicapped, blind, and cancer affected animals, in a safe and peaceful environment that supports their recovery.



Architectural Birdhouse Sanctuary

A thoughtfully designed haven for hundreds of birds, this iconic structure reflects our deep commitment to avian welfare, offering safe nesting and year round shelter.

The Bal Vatika

A vibrant playground with slides and swings, offering joyful moments for children and families to create lasting memories together.





AHINSADHAM®

•• Pashu Raksha Kendra ••

KEY ACTIVITIES



AWARENESS AGAINST ANIMAL CRUELTY

We hold workshops and seminars to promote animal protection and a cruelty free world.



VACCINATION PROGRAMS FOR ANIMALS

Regular vaccinations for animals against diseases such as FMD, Distemper, Rabies, and Lumpy diseases etc.



AMBULANCE SERVICE FOR ANIMALS

Our 24/7 ambulance service offers swift transport for injured animals, ensuring immediate care.



ENVIRONMENTAL AWARENESS INITIATIVE

We promote eco-friendly practices to preserve natural resources, and cultivate a culture of environmental responsibility.





AHINSADHAM®

•• Pashu Raksha Kendra ••

KEY ACTIVITIES



EDUCATIONAL STUDENT VISITS

25,000 students visit each year to explore animal care, sustainable living, and compassionate coexistence.



TRAINING FOR MEDICAL INTERNS

Trains 300+ veterinary interns annually across India with hands on experience in surgery and critical care.



AHINSA YAGNA BIANNUAL 2-DAY PROGRAM

This event promotes non-violence while protecting, conserving, and caring for nature, water, birds, and animals.



RESCUE AND REHABILITATION EFFORTS

We rescue and rehabilitate stray, injured, and abandoned sick animals.





AHINSADHAM®

•• Pashu Raksha Kendra ••

HIGHLIGHTS OF THE AHINSA YAGNA EVENT 2025

What is the Ahinsa Yagna Event?

The Ahinsa Yagna is a biannual event two-day gathering at Ahinsadham, celebrated for over two decades with the core theme “Non-violence: Yagna of Jeevdaya.” It brings together global experts, enthusiasts, and visitors to share knowledge on animal welfare, natural farming, and environmental preservation. We also appreciate and honour the efforts of other NGOs and individuals working in the field of conservation. The event also showcases insightful discussions and awareness exhibitions, cultural programs, spiritual gatherings, and guided tours of Ahinsadham.





AHINSADHAM®

•• Pashu Raksha Kendra ••

PAST EVENTS

Moments that make a difference



Visit at Ahinsadham
by Pujya Bhaishri
Shri Rameshbhai Oza



Visit at Ahinsadham by
Indian Television Producer
Shri Asit Kumarr Modi



Ramkatha at
Nandi Sarovar by Pujya
Shri Morari Bapu



Ramkatha at
Nandi Sarovar attended by
Shri Gautam Adani



Parmarth Ek Utsav an
exclusive designed by
Shri Manoj Muntashir
(Performed for Ahinsadham)



Visit at Nandi Sarovar by
Hon. CM of Gujarat,
Shri Bhupendrabhai Patel





AHINSADHAM®

•• Pashu Raksha Kendra ••

ACHIEVEMENTS

Recognized for Excellence



Records

- Guinness World Record (2002)



Awards & Honours

- Gau Raksha Ratna Samman (2025)
- Jeev Day Award - AWBI (2025)
- Swarnim Gujarat Award (2011)
- Mahavir Jeevdaya Award (2008)
- Best Animal Welfare Organisation (2002)



Certifications

- ISO 9001 (2008)
- All India Human Rights Association (2007)
- Animal Welfare Board of India (2006)



Recognitions & Appreciations

- Certificate from Shri Harjivanbhai Patel, State Minister of Gujarat.
- Honoured by Shri Chinubhai Patel & Gujarat Gopalak Vikas Nigam.





AHINSADHAM®

•• Pashu Raksha Kendra ••

OUR PARTNERS

Our CSR Partners, Our Strength in Service





AHINSADHAM®

• • Pashu Raksha Kendra • •

DONATION SCHEMES OF THE ORGANIZATION

Building a better future together

FOUNDATION PILLAR SUPPORT

₹5,00,000

Your name will be inscribed on the Donor Recognition Wall as a pillar of Ahinsadham's ecosystem of care.



SPECIAL DAY TRIBUTE (KAYMITITHI)

₹54,000

Donate on a birthday, anniversary, or memorial. Their name will be displayed annually on your selected date.



ICU ANIMAL CARE (ONE MONTH)

₹3,51,000

Provides specialized nutritious food for critically ill animals admitted in the ICU to aid their full recovery.



ONE TRUCK OF FRESH GRASS

₹27,000

Sponsor a full truck of fresh fodder to nourish hundreds of rescued animals with healthy, natural feed.



SANCTUARY (ABHYARANYA) SUPPORT

₹2,25,000

Part of our 10 lakh tree plantation initiative, this fund supports the long-term upkeep and maintenance of the natural sanctuary.



ADOPT A COW

₹12,000 (YEARLY)

ACH - ₹1000 (Per Month)

Adopt a cow's yearly care by contributing to her feed, shelter, and medical needs through this annual plan.



MEDICAL AID (ONE MONTH)

₹1,08,000

Covers essential surgeries, advanced treatments, and life saving medicines for animals under care.



PLANT A TREE

₹2,700

A one time donation ensures a one tree is planted and nurtured for life at Ahinsadham.





AHINSADHAM®

•• Pashu Raksha Kendra ••

EVERY ACT OF SUPPORT MATTERS

Registered on NGO Darpan (NITI Aayog, Govt. of India)



Bhagwan Mahavir Pashu Raksha Kendra
+91 70454 35545

7045435545@okbizaxis



FOR OUR DONORS ACROSS INDIA

Bank Details: Mumbai Branch

A/c: Bhagwan Mahavir Pashu Raksha Kendra

Bank Name – HDFC Bank LTD

Branch: Borivali (E)

Account Number: 50200019295950

IFSC Code: HDFC0001106

FOR OUR NRI DONORS

We accept FCRA & CSR funds

DONATE ONLINE

<https://donation.ahinsadham.org/en>





AHINSADHAM®

•• Pashu Raksha Kendra ••

PLAN YOUR VISIT TO AHINSADHAM



DISTANCE FROM AHINSADHAM

- | | | | |
|---------------|----------|-----------------|----------|
| • Arnathdham | - 1.2 km | • Mandvi | - 40 km |
| • Mundra | - 8.6 km | • Bhuj | - 44 km |
| • Adani Port | - 13 km | • Gandhidham | - 58 km |
| • Bhadreswar | - 25 km | • Rann of Kutch | - 90 km |
| • 72 Jinalaya | - 30 km | • Dholavira | - 178 km |



AHINSADHAM®

•• Pashu Raksha Kendra ••





AHINSADHAM®

•• Pashu Raksha Kendra ••

CONTACT US

Reach Out — We're Just a Call Away



Shri Mahendra Ratanshi Sangoi
(Donor Trustee & Managing Director)



Shri Haresh Nagji Vora
(Trustee & President)



Shri Manilal Vallabhji Gala
(Vice President)



KUTCH OFFICE

Bhagwan Mahavir Pashu Raksha
Kendra, Pragpar Road Junction,
Mundra – 370 415. Kutch. Gujarat.
Off. No. 70691 88555 / 70693 88555



DADAR OFFICE

58, 1st Floor, Vijay Nagar Building,
Above Kamat Hotel,
Dadar (W), Mumbai – 400 066.
Off. No. 97267 45555



MUMBAI OFFICE

5, Gurukrupa Apartment,
Kasturba Cross Road No.1,
Borivali (E). Mumbai – 400 066.
Off. No. 97264 85555 / 97264 75555



EMAIL US :

info@ahinsadham.org
csr@ahinsadham.org
kutch@ahinsadham.org
socialconnect@ahinsadham.org



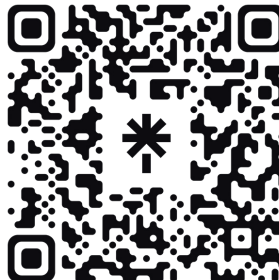
Ahinsadham_official



Ahinsadham



AHINSADHAM



AHINSADHAM



AHINSADHAM (BMPRK)



Ahinsadham_PRK